

# Project Profile

## General Project Information

**Project Location:** SH 3, Texas City, Galveston County, TX  
**Date Placed:** February 2002  
**Traffic:** 3 million ESALs; 12,000 ADT

## Existing Surface Condition

**Previous Condition:** HMA overlay over PCC  
**Joint Spacing:** 60'  
**Reinforcement:** 5/8" dowels  
**Surface Preparation:** Milled to 1"

## Strata® Section

**Interlayer thickness:** 1"  
**Overlay mix type:** Superpave  
**Overlay Thickness:** 2.5"  
**Overlay PG used:** 76-22

## Control Section

**Control Sections Placed:**  
 A. Chip seal and 1.5" HMA overlay  
 B. Mill to 1", Fabric, 2.5" HMA overlay  
 D. No treatment or chip seal

**Overlay mix type:** Superpave  
**Overlay PG used:** 76-22

## Project Layout

D	Section C	
D	Section A	Section B

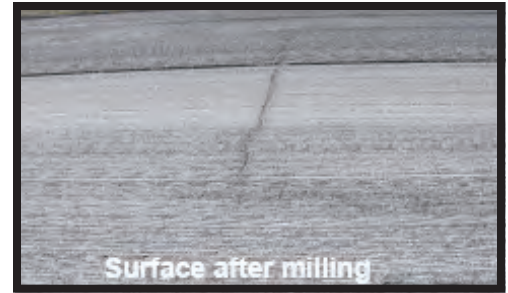
A = Chip seal with 1.5" PG 76-22 overlay  
 B = Mill 1" - Fabric - 2.5" PG 76-22 overlay  
 C = Mill 2" - 1" Strata® Interlayer - 2.5" PG76-22 overlay  
 D = Control Section - No treatment or chip seal

## Performance Data

Performance evaluations were made after one, two and three years. The graph shows the percent of preexisting cracks that have reflected through the new surface.

*For more information about the Strata® reflective crack relief system or other solutions to your paving needs, contact your local Road Science™ representative.*

Preconstruction photo



Photos after 1 year

