

# Project Profile

## General Project Information

**Project Location:** Iowa Route 9  
Winnesheik Co., near Decorah

**Date Placed:** August 2001

**Traffic:** Current 3000 AADT, 21% trucks  
Design ESALs 2,272,000

## Existing Surface Condition

**Previous Condition:** 9" of Jointed Concrete Pavement (JCP)

**Joint Spacing:** 20 feet

**Reinforcement:** Dowelled

**Surface Preparation:** Varying thickness leveling course

## Strata® Section

**Interlayer thickness:** 1"

**Overlay Mix Type:** Type 'A' Asphalt Cement Concrete binder & surface

**Overlay Thickness:** 1.5 inch Type 'A' Asphalt Cement Concrete surface  
2.0 inch Type 'A' Asphalt Cement Concrete intermediate  
0 to 1.5 inch leveling course

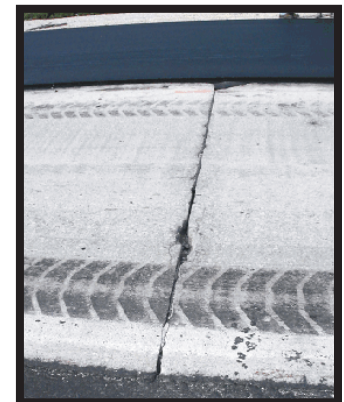
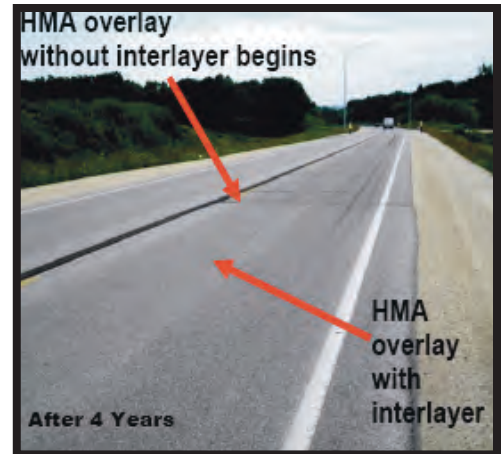
**Overlay PG used:** PG 58-34 surface & binder (98% reliable recommended binder)

## Control Section

**Control Sections:** Standard hot mix asphalt

**Overlay Mix Type:** 1.5 inch Type 'A' Asphalt Cement Concrete surface  
3.0 inch Type 'A' Asphalt Cement Concrete intermediate  
Average 3.0 inch of leveling course that varied

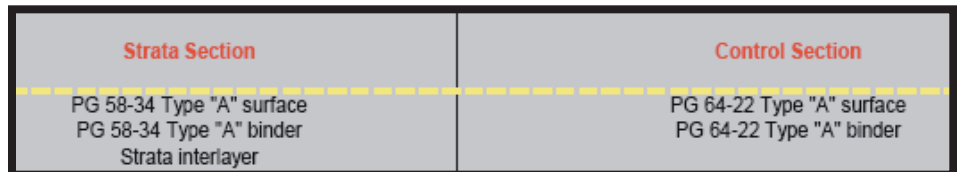
**Overlay PG used:** PG 64-22 surface & PG 64-22 binder (50% reliable binder)



**Construction**

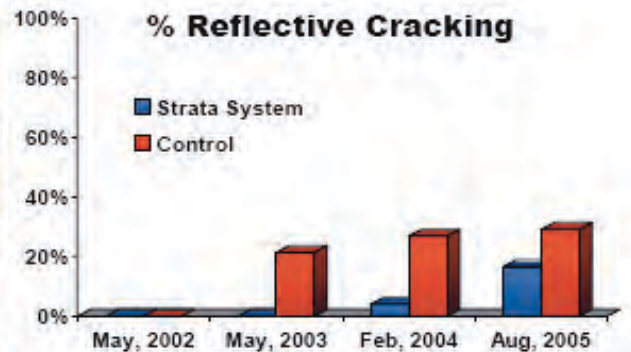
## Project Layout

The Strata® and Control Sections were end-to-end as shown.



## Performance Data

Crack counts after each of the first 4 years showed there was significantly less cracking in the Strata® section, as illustrated in the graph. Coring the surface reflective crack revealed that interlayer was not cracked, and that the surface crack was offset from the PCC joint as predicted, indicating there is no direct path for moisture intrusion into the pavement structure.



For more information about the Strata® reflective crack relief system or other solutions to your paving needs, contact your local Road Science™ representative.

